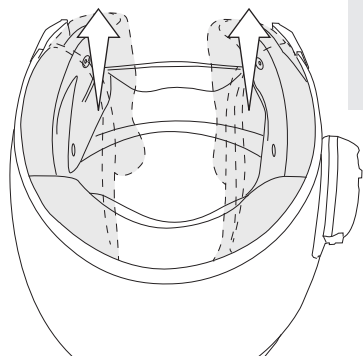
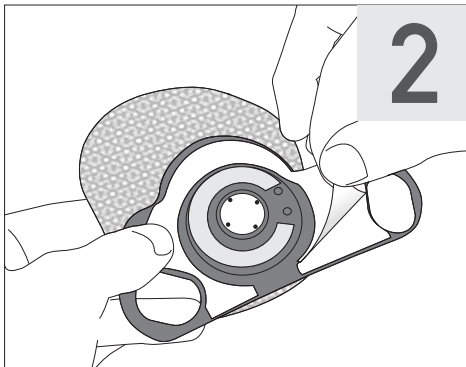
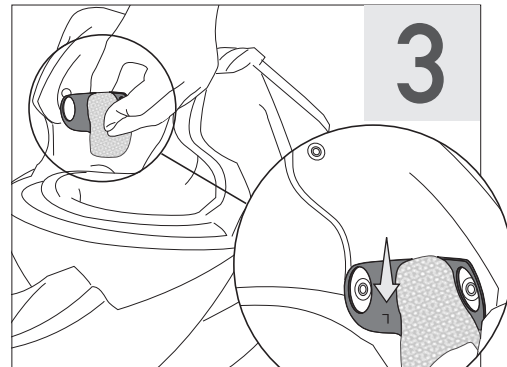


1

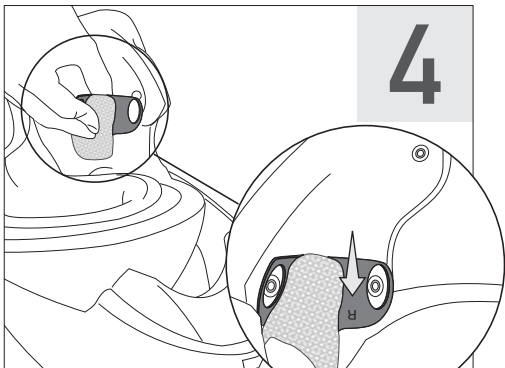
Spanciare le clip dell'imbottitura ed estrarla dal casco
Release the clips and remove the cheek pad from the helmet

2

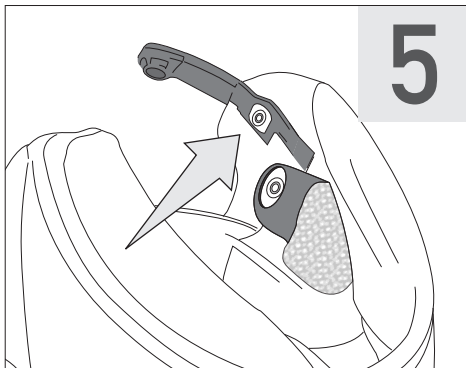
Rimuovere la pellicola protettiva del biadesivo
Remove the protective film of the double-sided tape

3

Inserire l'auricolare sinistro nell'apposito alloggiamento facendolo coincidere con le clip del casco
Insert the left earphone in the dedicated slot aligning it with the clips of the helmet

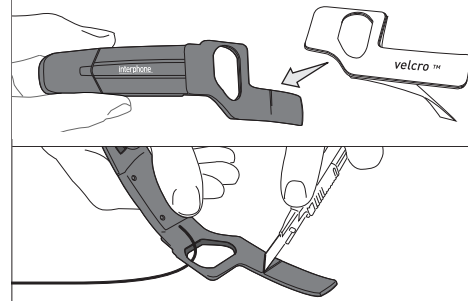
4

Inserire l'auricolare destro nell'apposito alloggiamento facendolo coincidere con le clip del casco
Insert the right earphone in the dedicated slot aligning it with the clips of the helmet

5

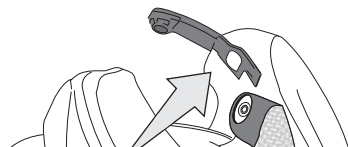
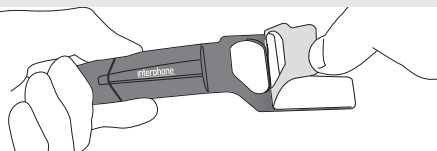
Applicare il microfono al casco facendo coincidere il foro con la clip dell'imbottitura
Attach the microphone to the helmet by aligning the hole with the cheek pad clip

SOLO PER MODELLO SHOEI® J-CRUISE
ONLY FOR SHOEI® J-CRUISE MODEL



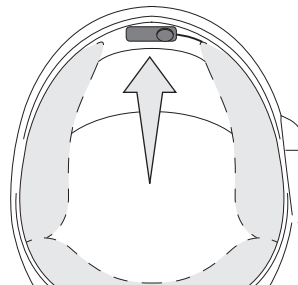
Rimuovere la pellicola protettiva ed applicare il velcro™ sul microfono, accorciare il microfono tagliando in corrispondenza della scanalatura
Remove the protective film and apply the Velcro™ on the microphone, shorten the microphone cutting it in correspondence of the groove

SOLO PER MODELLO SHOEI® J-CRUISE
ONLY FOR SHOEI® J-CRUISE MODEL



Rimuovere la seconda pellicola protettiva e applicare il microfono al casco
Remove the second protective film and apply the microphone to the helmet

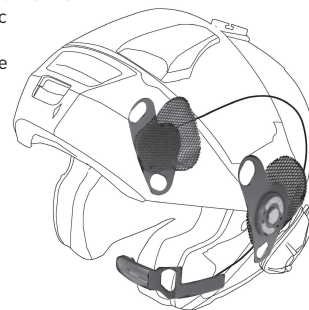
SOLO PER MODELLO SHOEI® GT AIR
ONLY FOR SHOEI® GT AIR MODEL



Rimuovere la pellicola protettiva e applicare il microfono al casco
Remove the protective film and apply the microphone to the helmet

Pro sound

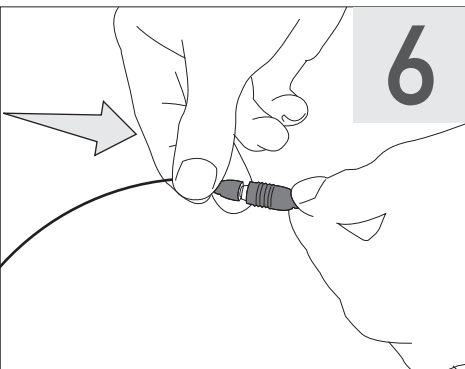
Kit for
Shoei® helmet
neotec
gtair
jcruiase



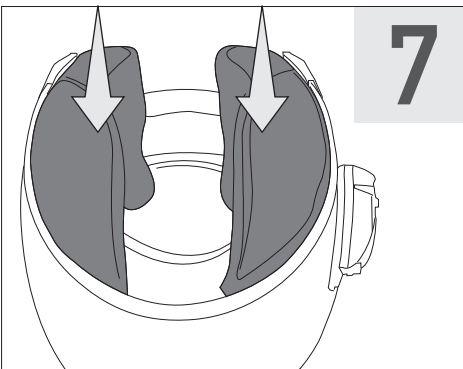
ISTRMICSHO

Istruzioni di montaggio
Assembly instructions

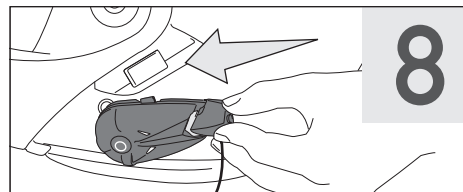
interphone
cellularline



Collegare i connettori
Join the connectors



Rimontare l'imbottitura agganciandola alle clip
Put the cheek pad back in place attaching it with the clips



Collegare auricolari/microfono alla centralina
Connect headphones/microphone to the control unit

interphone
cellularline

Distributed By: **CELLULAR ITALIA** S.P.A.

Via Lambrakis 1/A - 42122 Reggio Emilia (Italy)
www.interphone.cellularline.com

